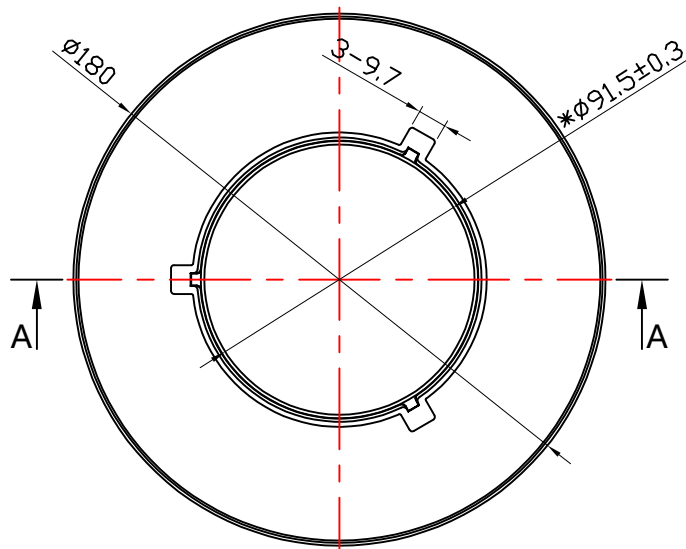
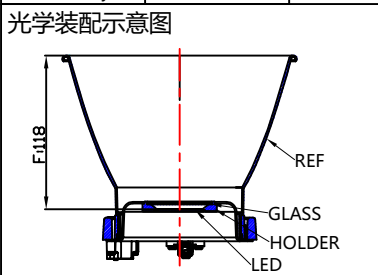


A - A



Light Source	COB 200W LES 33mm (2700K-6000K)
Plastic Holder	
Metal Adaptor	
Design Angle	35°±3°
Measured Angle	33.8°
Efficiency	



- 技术要求:
- 1.产品未注圆角与拔模斜度按3D.
 - 2.未注公差参考公差表.
 - 3.产品外观按《N-SIP-QA-04 铝反光杯检验标准》.

PRODUCT BOM				
NO.	PRODUCT NAME	PRODUCT CODE	QUANTITY	MATERIAL/FINISH
①	7-0814-A	94.07.0814.000	1	T=1.2mm 1090AL/Andoizing
②	保荣卡口	7.47.00192	1	ADC12/Painting

DIMENSION TOLERANCE TABLE (UNLESS OTHERWISE STATED)
未注尺寸公差表

> 0-5	> 5-30	> 30-90	> 90-150	> 150-250	> 250-400	> 400-700
±0.15	±0.2	±0.4	±0.5	±0.8	±1.5	±2

ANGULAR DIMENSIONAL TOLERANCE TABLE (UNLESS OTHERWISE STATED)
角度尺寸公差表 (单位: 度)

> 0-10	> 10-50	> 50-120	> 120-250	> 250-360
±1°	±0.5°	±0.3°	±0.2°	±0.166°

产品图
PRODUCT DRAWING

单位
UNIT
mm

Nata[®]

版本
VERSIONS
K-

产品编码
PRODUCT CODE
91.07.0813.000

产品名称
PRODUCT NAME
7-0813-M

客户代号
CUSTOMER ID
NT

客户编号
CUSTOMER CODE
FS-180-26D标准罩

标记 MARK	处数 NO. OF MODIF.	更改内容 MODIFICATIONS	签名 SIGNED BY	更改日期 MODIF. DATE
设计 DESIGNER	制图 DRAWN BY	比例 SCALE	1:1	
工艺 TECHNICIAN	审核 CHECKED BY	视角 1st ANGLE PROJECTION		
批准 APPROVED BY	日期 DATE (DD-MM-YYYY)	页数 PAGE	SHEET 1 OF 1	

11-10-2022

SHEET 1 OF 1