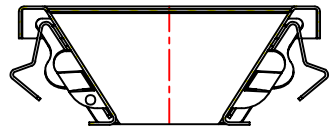
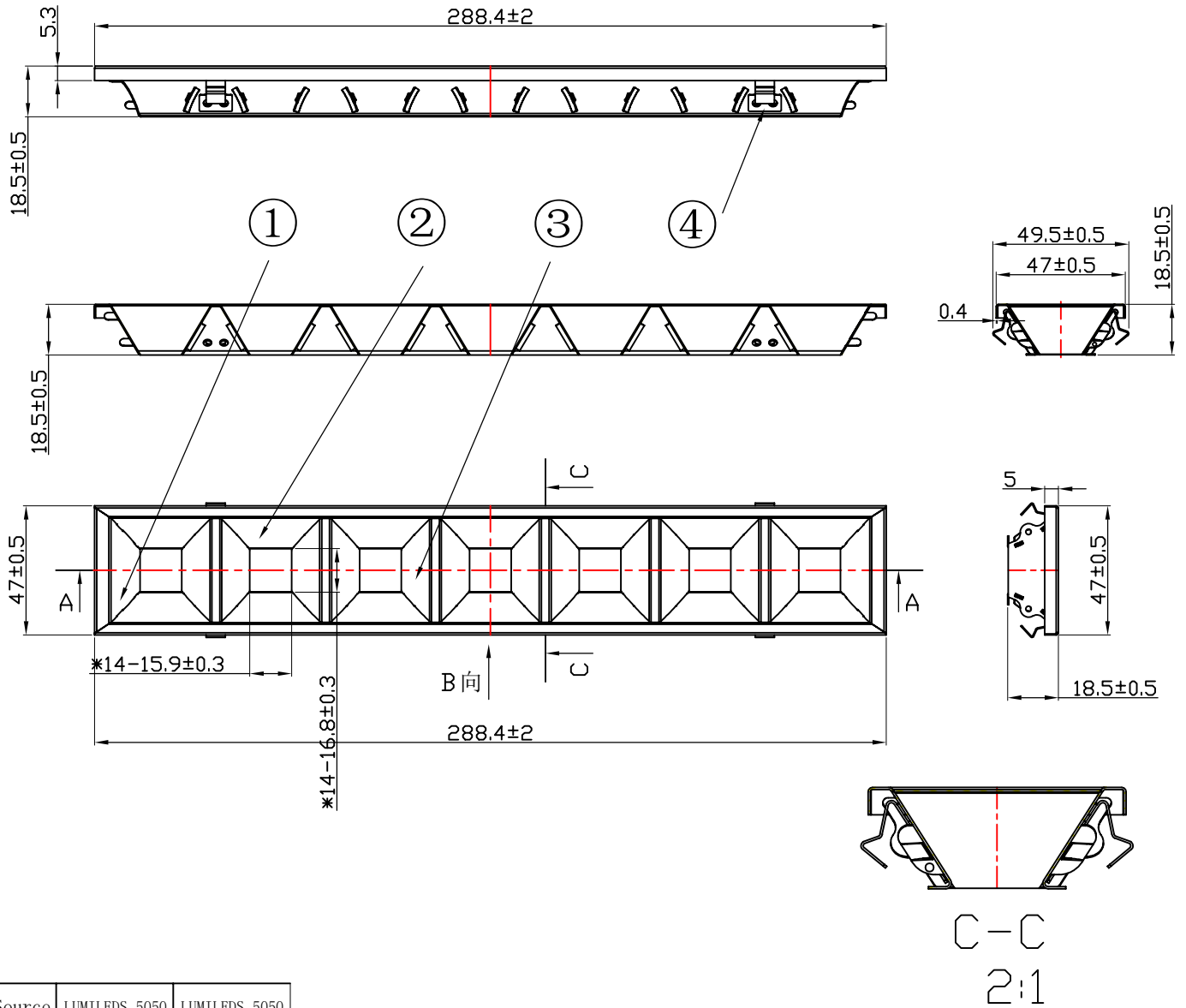


table for unmentioned tolerance in the drawing (unit: mm)				punch angle tolerance in the drawing (unit:degree)		
> 0-5	> 5-30	> 30-90	> 90-150	0-10	10-50	50-120
±0.15	±0.2	±0.4	±0.5	±1°	±0.5°	±0.3°
> 150-250	> 250-400	> 400-700		120-250	250-360	360 above
±0.8	±1.5	±2		±0.2°	±0.166°	±0.085°

"*" Marked for key control dimensions



C-C
2:1

Light Source	LUMILEDS 5050	LUMILEDS 5050
PlasticHolder		
LENS	LM07126060EM	LM07126080EM
Design Angle	60° ±5°	85° ±5°
Measured Angle	55° *57.5°	77.9° *83°
Efficiency		

产品对照表		
物料名称	物料编号	区别描述
6-0845-M	91.06.0845.000	1.Material: t=0.4mm 1100AL H16. 2.Surface treatment: Matt white coating
6-0845-M2	91.06.0845.001	1.Material: t=0.4mm Glossy aluminum/Glossy . 2.Surface treatment: *
6-0845-M3	91.06.0845.002	1.Material: t=0.4mm 97% high reflectance aluminum/Frosted surface 2.Surface treatment: *
6-0845-M4	91.06.0845.003	1.Material: t=0.4mm 1100AL H16. 2.Surface treatment: Matt black coating
6-0845-M5	91.06.0845.004	1.Material: t=0.4mm Matte aluminum/Matte. 2.Surface treatment: *

Technical requirements:

- 1.Material: t=0.4mm 97% high reflectance aluminum/Frosted surface.
- 2.Surface treatment: *
- 3.Product intolerance reference intolerance table.

标记处数		更改内容		签名		更改日期		P/N:		版本/REV	
Mark Amended Times		Amended Content		Signature		Amended Date		91.06.0845.002		K1	
设计		制图		比例		1:1		产品名称		6-0845-M3	
Designer		Drawing by		View		View		客户代号		NT	
工艺		审核		图档路径		The path of file		客户编号		Customer Item	
Technology		Auditor		共1页 第1页		共1页 第1页		Nata®			
批准		日期		2022.8.15							
Approval		Date									