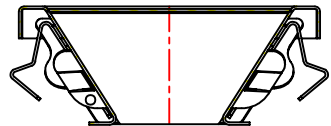
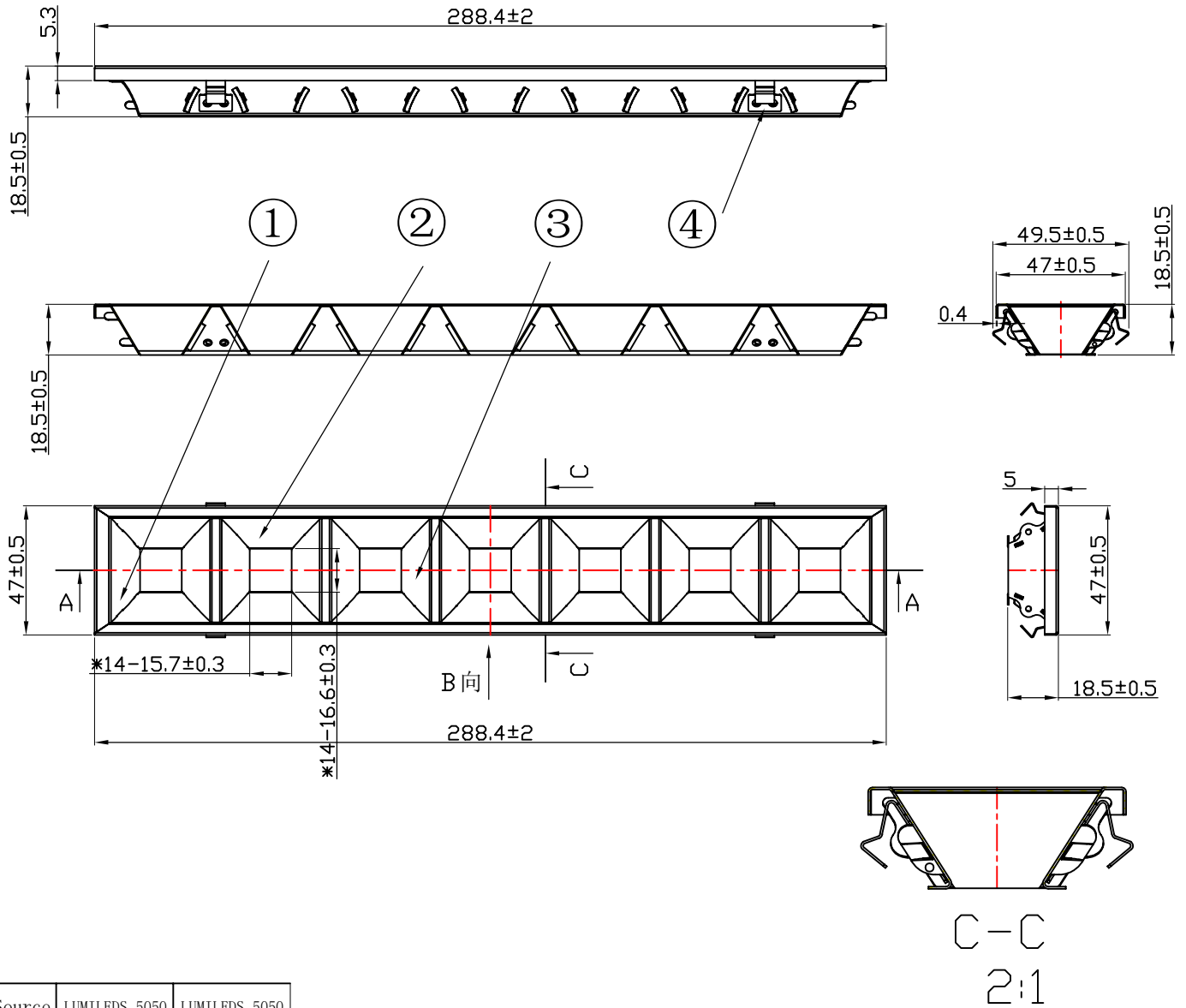


table for unmentioned tolerance in the drawing (unit: mm)				punch angle tolerance in the drawing (unit:degree)		
> 0-5	> 5-30	> 30-90	> 90-150	0-10	10-50	50-120
±0.15	±0.2	±0.4	±0.5	±1°	±0.5°	±0.3°
> 150-250	> 250-400	> 400-700		120-250	250-360	360 above
±0.8	±1.5	±2		±0.2°	±0.166°	±0.085°

"\*" Marked for key control dimensions



C-C  
2:1

Light Source	LUMILEDS 5050	LUMILEDS 5050
PlasticHolder		
LENS	LM0712606OEM	LM0712608OEM
Design Angle	60° ±5°	85° ±5°
Measured Angle	55° *57.5°	77.9° *83°
Efficiency		

产品对照表		
物料名称	物料编号	区别描述
6-0845-M	91.06.0845.000	1.Material: t=0.4mm 1100AL H16. 2.Surface treatment: Matt white coating
6-0845-M2	91.06.0845.001	1.Material: t=0.4mm Glossy aluminium/Glossy . 2.Surface treatment: *
6-0845-M3	91.06.0845.002	1.Material: t=0.4mm 97% high reflectance aluminium/Frosted surface 2.Surface treatment: *
6-0845-M4	91.06.0845.003	1.Material: t=0.4mm 1100AL H16. 2.Surface treatment: Matt black coating
6-0845-M5	91.06.0845.004	1.Material: t=0.4mm Matte aluminum/Matte. 2.Surface treatment: *

Technical requirements:

1. Material: t=0.4mm 1100AL H16.
2. Surface treatment: Matt white coating 70um-100um.
3. Drawing size does not include powder thickness.
4. Product untolerance reference untolerance table.

				P/N: 91.06.0845.000		版本/REV K1	
				产品名称 Product Name		6-0845-M	
				客户代号 Customer Code		NT	
				客户编号 Customer Item			
标记 Mark		处数 Amended Times		更改内容 Amended Content		签名 Signature	
设计 Designer		制图 Drawing by		更改日期 Amended Date		比例 Proportion	
工艺 Technology		审核 Auditor		视图 View		1:1	
批准 Approval		日期 Date		页数 Page		图档路径 The path of file	
		2022.8.15		共1页 第1页			
				方案图 Engineering drawings			
				<b>Nata®</b>			