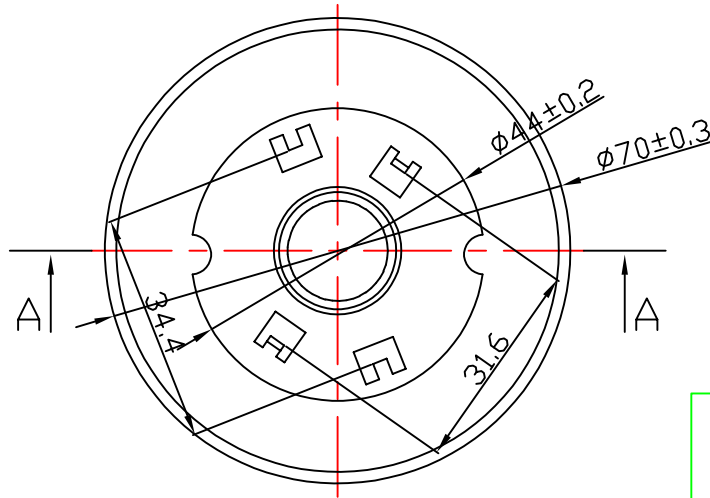
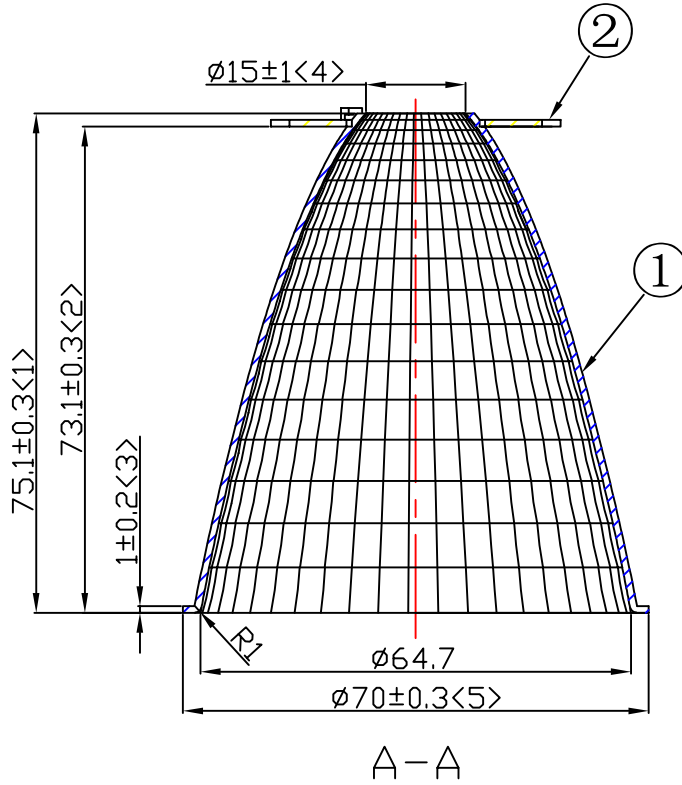


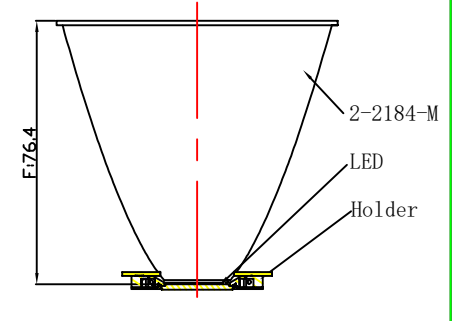
| Product bill of material | | | | |
|--------------------------|------------------------|------------------|-----|---------------------------|
| Serial number | material name | Masterial number | NO. | Describe |
| ① | 2-2094-H | 94.02.2094.000 | 1 | Material:T=1.0mm 1090AL |
| ② | 2-2184-M Metal Adaptar | 97.76.787.03 | 1 | Material:T=1.0mm 1060 H22 |

| table for unmentioned tolerance in the drawing (unit: mm) | | | punch angle tolerance in the drawing (unit:degree) | | |
|---|---------|---------|--|---------|-----------|
| 0-5 | 5-30 | 30-120 | 0-10 | 10-50 | 50-120 |
| ±0.15 | ±0.2 | ±0.5 | ±1° | ±0.5° | ±0.3° |
| 120-250 | 250-400 | 400-700 | 120-250 | 250-360 | 360 above |
| ±0.8 | ±1.5 | ±2 | ±0.2° | ±0.166° | ±0.083° |



| | |
|---------------------|-----------------------------------|
| Light Source | LUMILEDS LUXEON CoB 1208 LES15 |
| PlasticHolder | BJB47.360.508C |
| Design requiremengt | 24° ±3° |
| Measured result | 24° |

光学示意图



| Mark | Amended Times | Amended Content | | Signature | Amended Date |
|-----------------|---------------|-----------------|------------|----------------|--------------|
| Control Version | AO | Design Version | KO | Client Version | |
| Designer | | Drawing by | | Proportion | 1:1 |
| Technology | | Auditor | | View | |
| Approval | | Date | 2020.02.27 | Page | Total Page |

Nata[®]

| | |
|----------------|----------------|
| Customer Item | D70深筒反光杯24° |
| Customer Code | NT |
| Product Number | 91.02.2184.000 |
| Product Name | 2-2184-M |