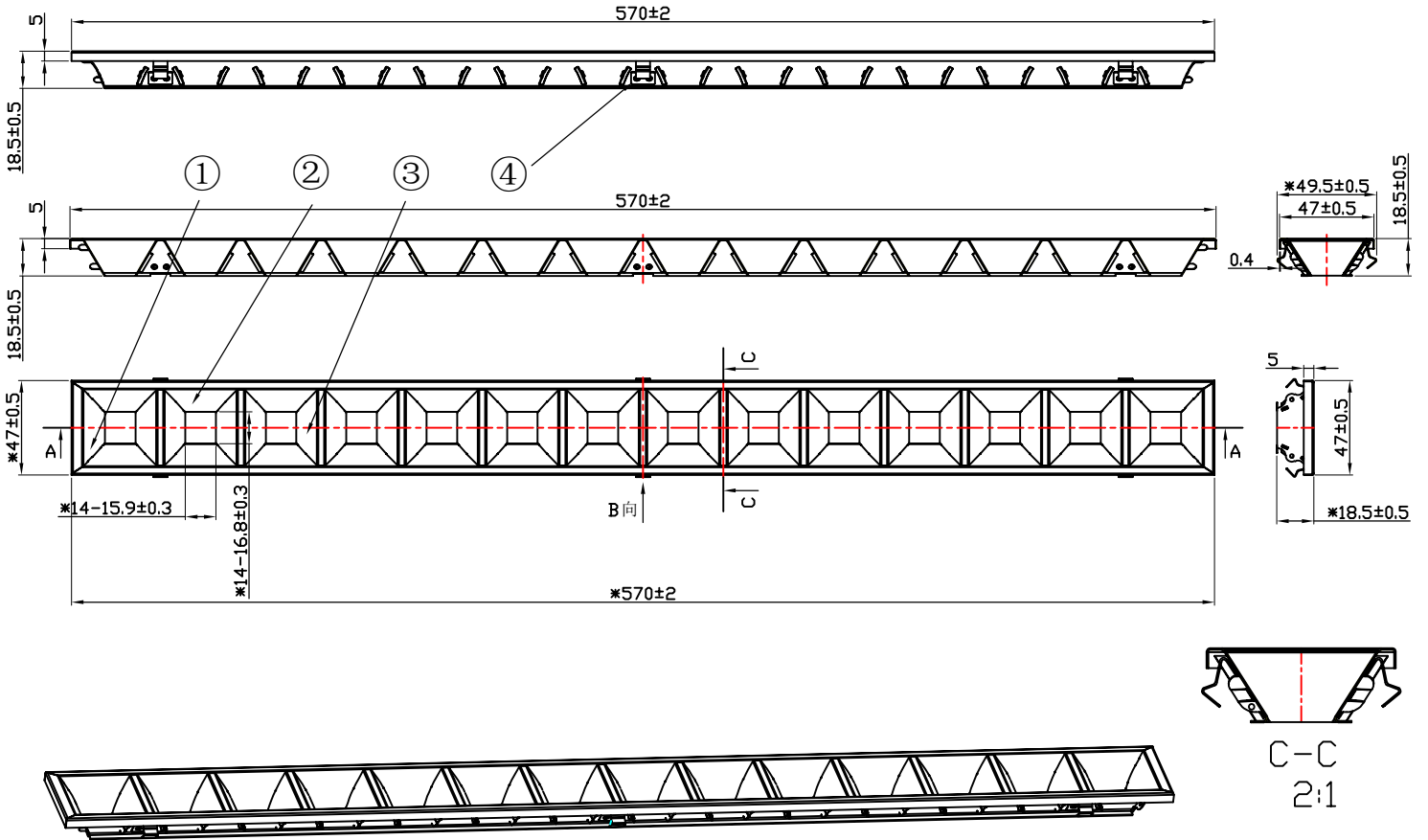


table for unmentioned tolerance in the drawing (unit: mm)				punch angle tolerance in the drawing (unit:degree)		
> 0-5	> 5-30	> 30-90	> 90-150	0-10	10-50	50-120
±0.15	±0.2	±0.4	±0.5	±1°	±0.5°	±0.3°
> 150-250	> 250-400	400-700		120-250	250-360	360 above
±0.8	±1.5	±2		±0.2°	±0.166°	±0.085°

“\*” Marked for key control dimensions



Light Source	LUMILEDS 5050	LUMILEDS 5050
PlasticHolder		
LENS	LM07126060EM	LM07126080EM
Design Angle	$60^\circ \pm 5^\circ$	$80^\circ \pm 5^\circ$
Measured Angle	$54.6^\circ \times 56.8^\circ$	$75.2^\circ \times 81.8^\circ$
Efficiency		

产品对照表		
物料名称	物料编号	区别描述
12-0080-M	91.12.0080.000	1.Material: t=0.4mm 1100AL H16. 2.Surface treatment: Matt white coating
12-0080-M2	91.12.0080.001	1.Material: t=0.4mm Glossy aluminium/Glossy . 2.Surface treatment: *
12-0080-M3	91.12.0080.002	1.Material: t=0.4mm 97% high reflectance aluminum/Frosted surface 2.Surface treatment: *
12-0080-M4	91.12.0080.003	1.Material: t=0.4mm 1100AL H16. 2.Surface treatment: Matt black coating
12-0080-M5	91.12.0080.004	1.Material: t=0.4mm Matte aluminium/Matte. 2.Surface treatment: *

Technical requirements:  
 1. Material: t=0.4mm 97% high reflectance aluminum/Frosted surface  
 2. Surface treatment: \*  
 3. Product untolerance reference tolerance table.

				P/N: 91.12.0080.002		版本/REV K3	
				产品名称 Product Name		12-0080-M3	
				客户代号 Customer Code		NT	
				客户编号 Customer Item			
标记 Mark	处数 Amended Times	更改内容 Amended Content		签名 Signature	更改日期 Amended Date	方案图 Engineering drawings	
设计 Designer		制图 Drawing by		比例 Proportion	1:1		
工艺 Technology		审核 Auditor		视角 View			
批准 Approval		日期 Date	2022.8.15	页数 Page	共1页 第1页		
				图档路径 The path of file			