



NATA LIGHTING CO.,LTD.
www.nata.cn
Email:info@nata.com
Tel:+86-750-3770000 Fax:+86-750-3771111
Address:380JinOu Road,GaoXin Zone,Jiang Men City,Guangdong,China

Nata

LumCAT: 1-0938-N	
Luminaire: 92.70.246.00	
Report No: 210630-B010	Voltage(V): 36.8000
Test No: 210630-C010	Current(A): 0.3050
LampCAT: Fortimo LED SLM 1202 G7N	Power (W): 11.2240
Lamp flux(lm): 1492.0	PF: 1.0000
Number of Lamps: 1	Ballast type: DC
Length(mm): 570	Width(mm): 45
Phm Type: C	Height(mm): 20

Photometric Results

Lumens(lm): 1162.45
Efficiency(%): 77.91%
Lumens(lm)/Power(W): 103.57
Central intensity(cd): 2382.750
Maximum intensity(cd): 2382.750
Angle of maximum intensity: C=0.0 γ =0.0
Beam Angle(50%Imax): [C0/180]Total=41.6
 [C90/270]Total=41.6
Field angle(10%Imax): [C0/180]Total=62.1
 [C90/270]Total=62.1
Maximum s/h(1/2): C0_180=0.68 C90_270=0.68
Maximum s/h(1/4): C0_180=0.65 C90_270=0.65
Up flux rate of lamp(%): 0.00%
Down flux rate of lamp(%): 77.91%
Up flux rate of LUM(%): - -
Down flux rate of LUM(%): 100.00%
CIE Type : Direct lighting
Output flux ratio in π solid angle : 98.018%

Equipment: GMS1980
Temperature(°C): 25.0

Date: 2021/6/30
Humidity(%): 65.0%

Operator: NT07
Distance(m): 7.50

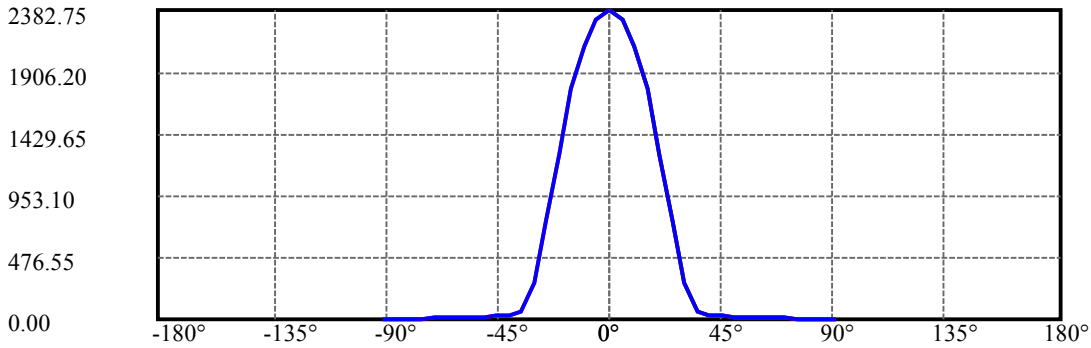
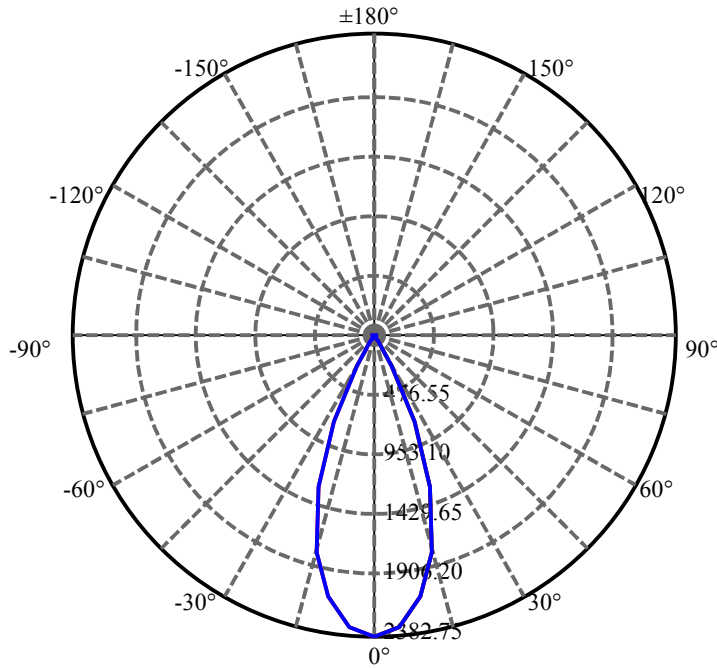
$\gamma(^{\circ})$	Average I(cd)	Zonal F(lm)	Sum F(lm)	Eff Flux(%)	Eff Sum(%)
0.0	2382.750	0.000	0	.000%	.000%
5.0	2309.766	56.098	56.098	3.760%	4.826%
10.0	2101.711	157.812	213.91	10.577%	18.402%
15.0	1777.148	230.091	444.001	15.421%	38.195%
20.0	1276.741	251.683	695.685	16.868%	59.847%
25.0	755.655	213.161	908.846	14.287%	78.184%
30.0	285.476	131.756	1040.602	8.831%	89.518%
35.0	60.005	50.874	1091.476	3.410%	93.895%
40.0	32.203	15.384	1106.86	1.031%	95.218%
45.0	23.716	10.354	1117.214	.694%	96.109%
50.0	18.865	8.604	1125.819	.577%	96.849%
55.0	14.977	7.358	1133.177	.493%	97.482%
60.0	11.974	6.230	1139.406	.418%	98.018%
65.0	9.541	5.230	1144.637	.351%	98.468%
70.0	7.882	4.412	1149.049	.296%	98.847%
75.0	6.694	3.810	1152.858	.255%	99.175%
80.0	6.223	3.456	1156.315	.232%	99.472%
85.0	5.660	3.229	1159.543	.216%	99.750%
90.0	4.950	2.905	1162.449	.195%	100.000%

ZONAL LUMEN SUMMARY

Zone	Lumens	%Lamp	%Fixt
0-30	1040.60	69.74%	89.52%
0-40	1106.86	74.18%	95.22%
0-60	1139.41	76.37%	98.02%
0-90	1159.54	77.72%	99.75%
0-120	1159.54	77.72%	99.75%
0-180	1162.45	77.91%	100.00%
60-90	26.37	1.77%	2.27%
90-120	0.00	0.00%	0.00%
90-130	0.00	0.00%	0.00%
90-150	0.00	0.00%	0.00%
90-180	0.00	0.00%	0.00%
0-25.80	929.96	62.33%	80.00%

ZONAL LUMEN SUMMARY

0-10	213.91
10-20	481.77
20-30	344.92
30-40	66.26
40-50	18.96
50-60	13.59
60-70	9.64
70-80	7.27
80-90	3.23
90-100	0.00
100-110	0.00
110-120	0.00
120-130	0.00
130-140	0.00
140-150	0.00
150-160	0.00
160-170	0.00
170-180	0.00



C0(Max): —————

C0/C180: —————

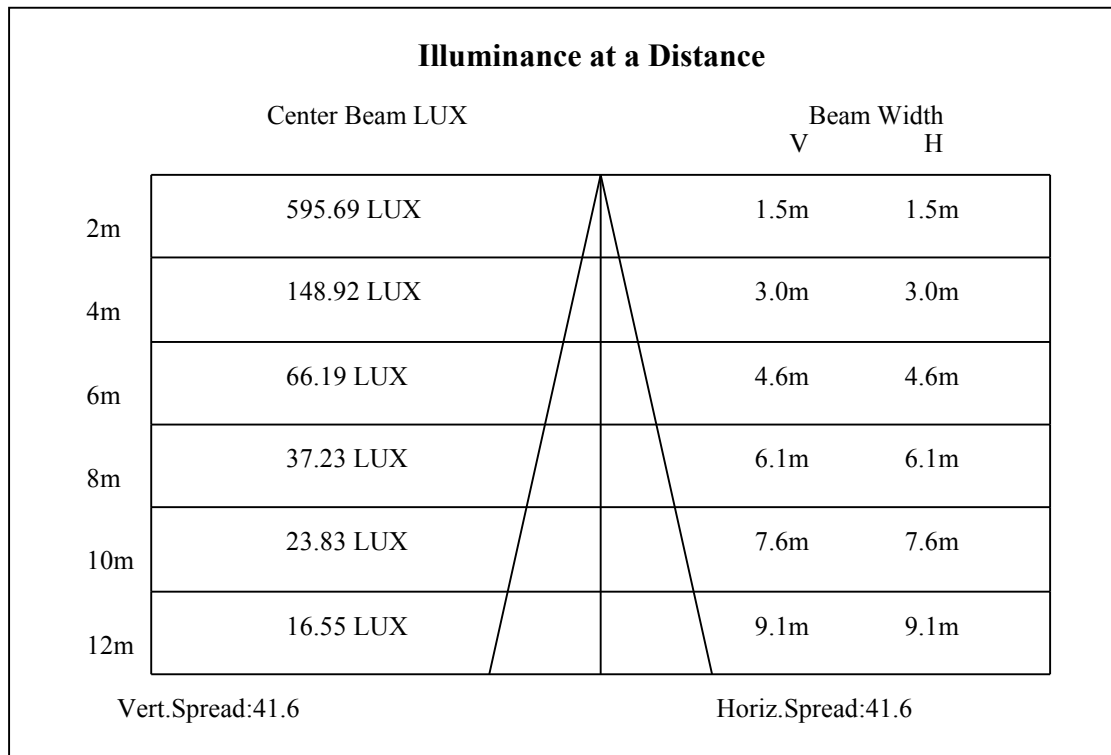
C90/C270: —————

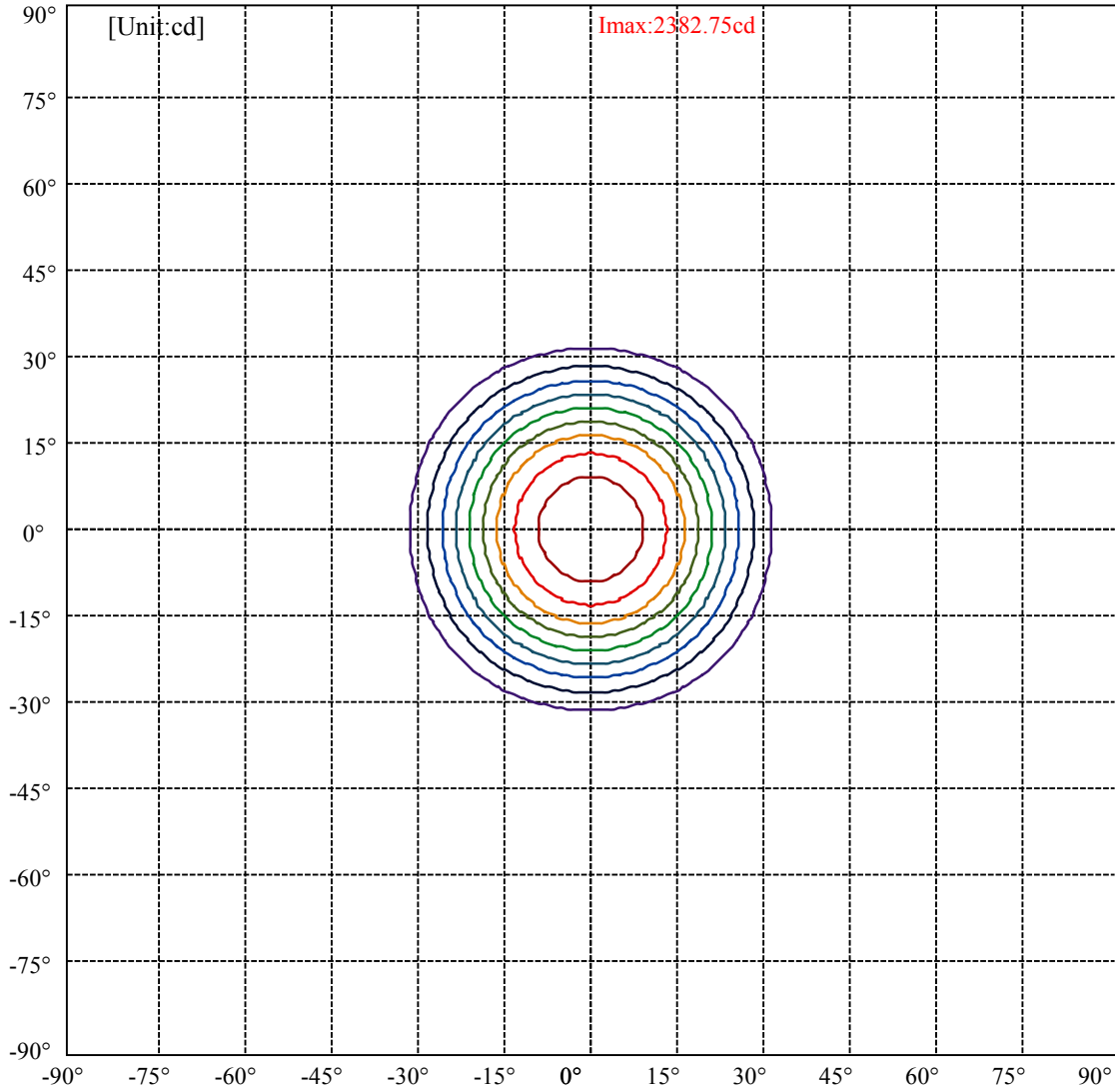
Field angle(10%Imax):C0/180Left:31.0 Right:31.0

:C90/270Left:31.0 Right:31.0

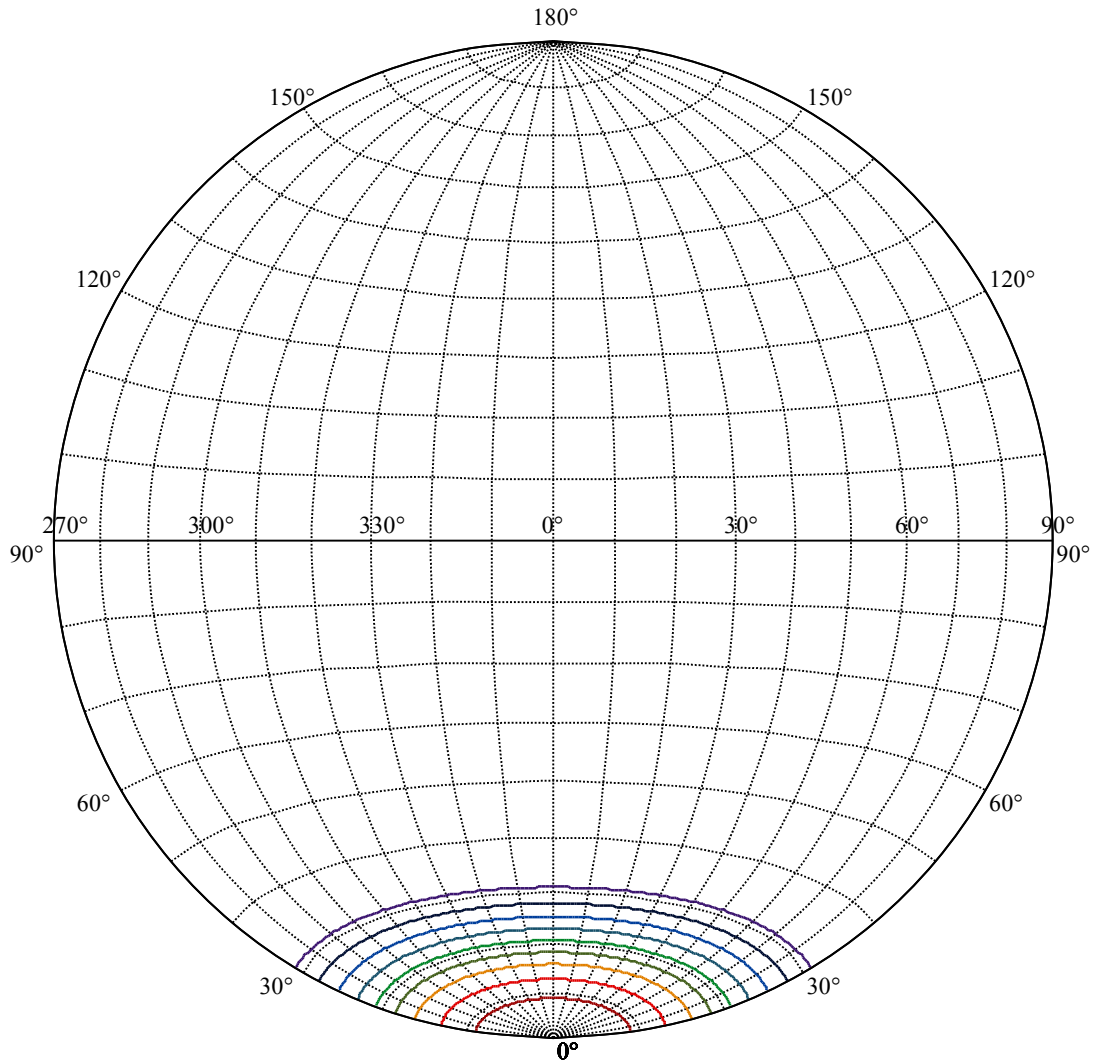
Beam Angle(50%Imax):C0/180Left:20.8 Right:20.8

:C90/270Left:20.8 Right:20.8





(10%Imax) 238.275	—
(20%Imax) 476.55	—
(30%Imax) 714.825	—
(40%Imax) 953.1	—
(50%Imax) 1191.38	—
(60%Imax) 1429.65	—
(70%Imax) 1667.93	—
(80%Imax) 1906.2	—
(90%Imax) 2144.48	—



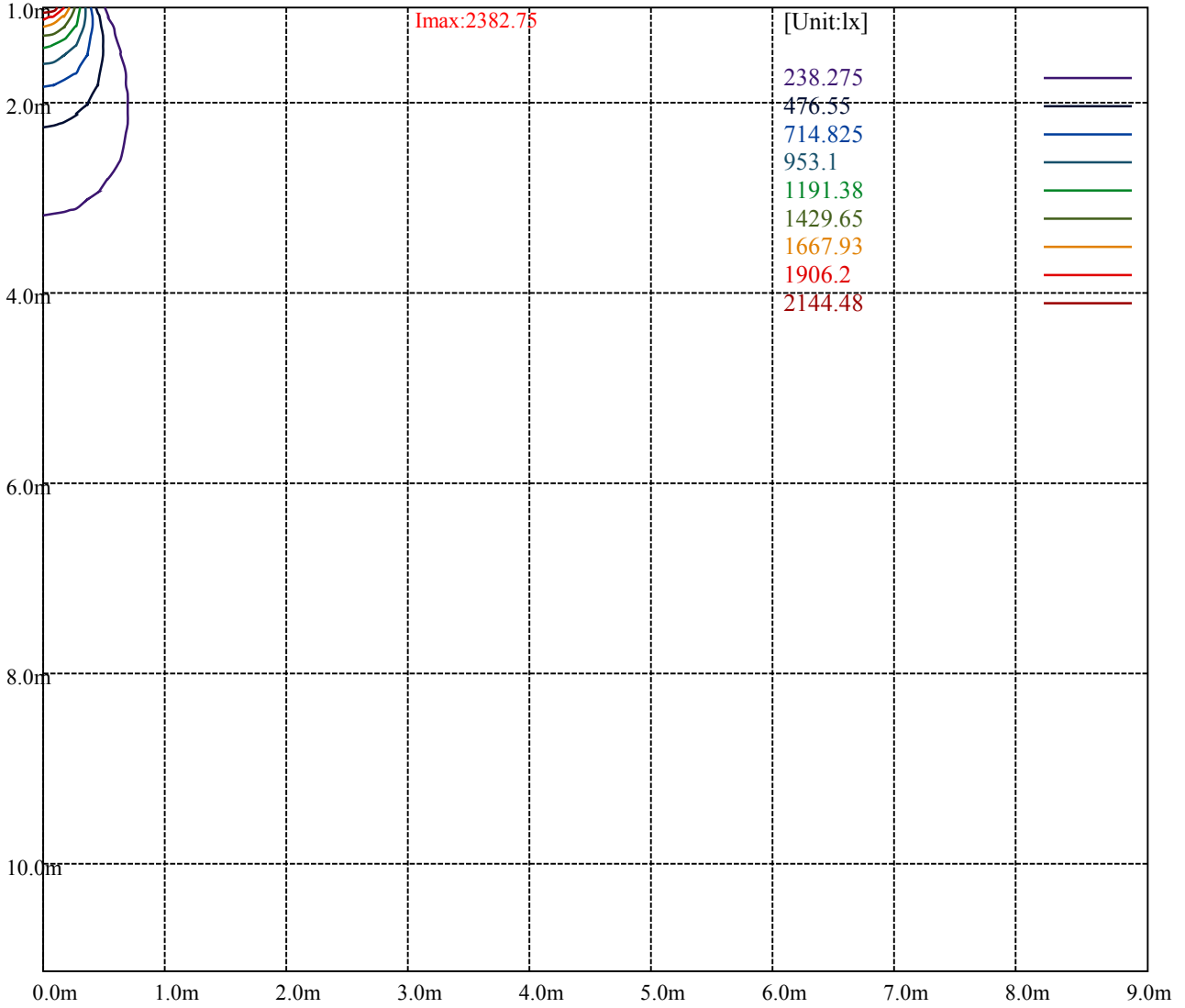
House

[Unit:cd]

Road

Imax:2382.75

(10%Imax) 238.275	—
(20%Imax) 476.55	—
(30%Imax) 714.825	—
(40%Imax) 953.1	—
(50%Imax) 1191.38	—
(60%Imax) 1429.65	—
(70%Imax) 1667.93	—
(80%Imax) 1906.2	—
(90%Imax) 2144.48	—



Luminance Table

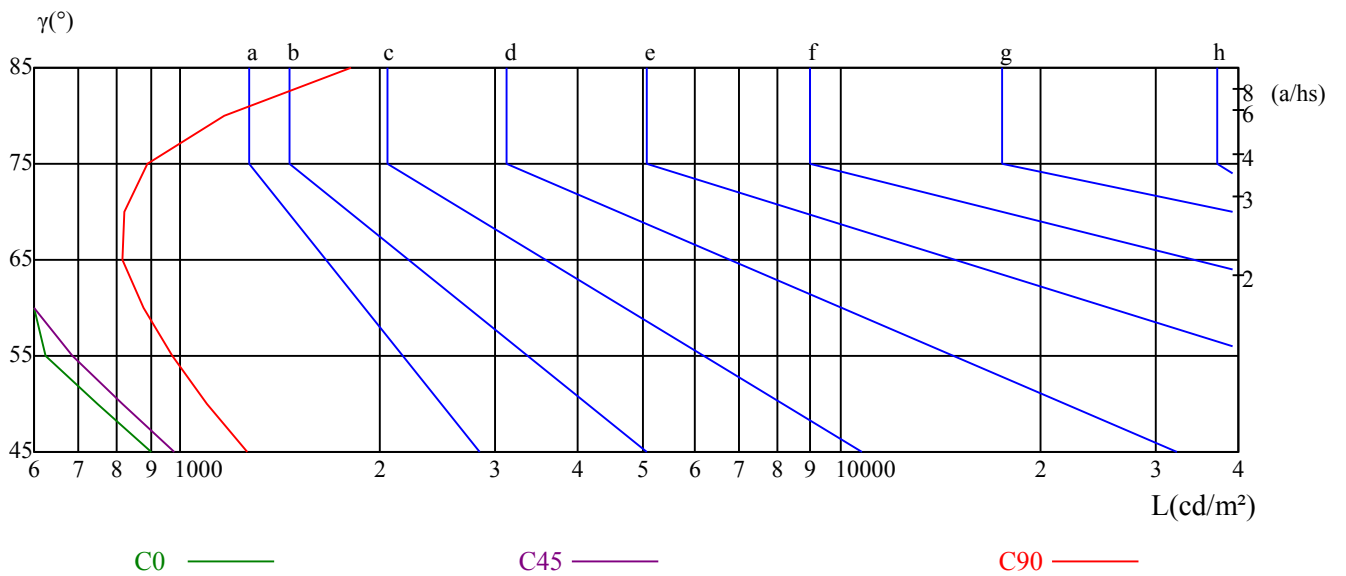
γ	45	50	55	60	65	70	75	80	85
C0	905	748	623	528	451	405	379	397	416
C45	976	815	686	588	510	465	445	478	519
C90	1263	1098	969	880	819	819	892	1165	1807

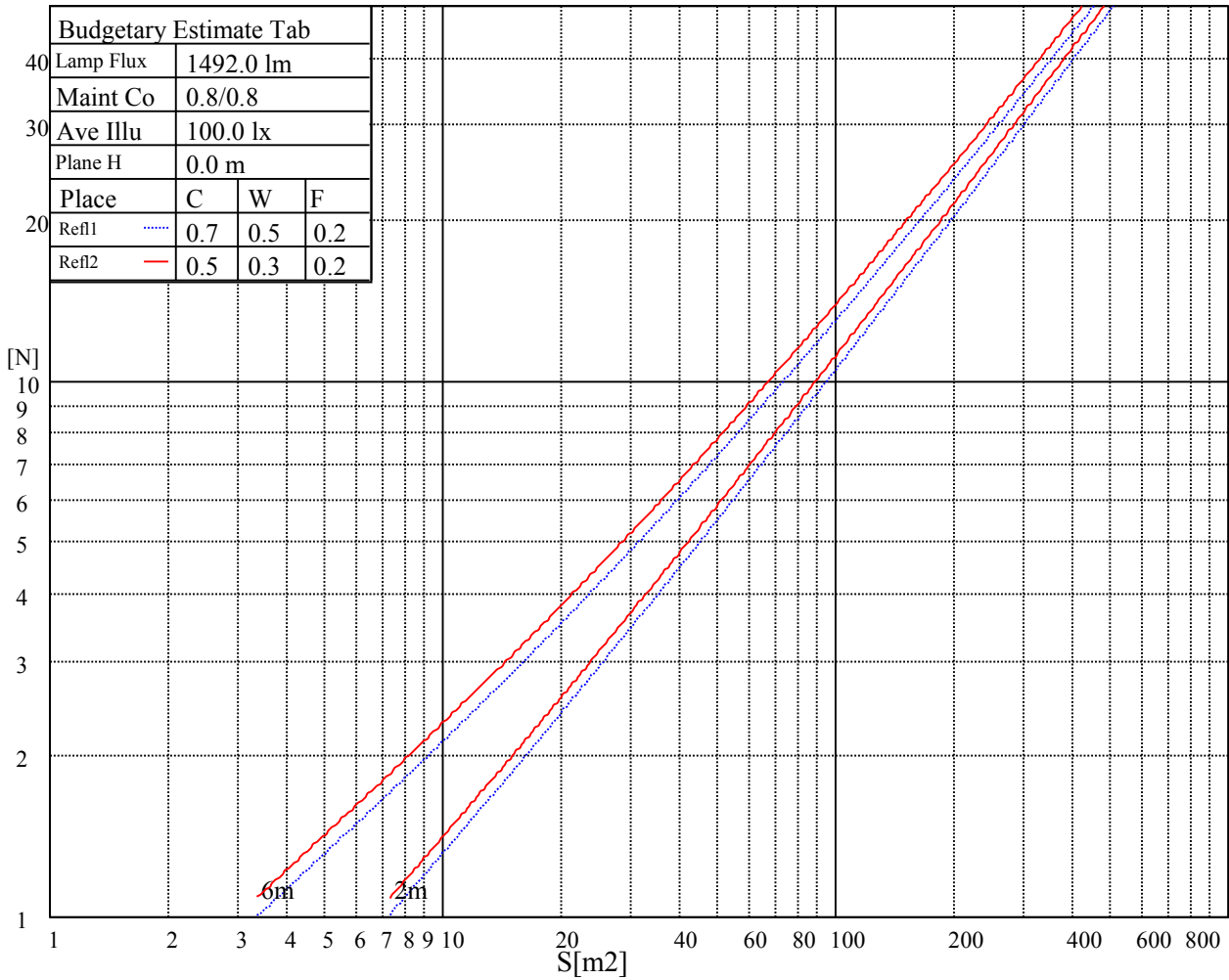
L(Hor)(65)	L(Ver)(65)	L45(65)	L(Hor)(75)	L(Ver)(75)	L45(75)	L(Hor)(85)	L(Ver)(85)	L45(85)
880	880	880	1008	1008	1008	2532	2532	2532

Glare Table

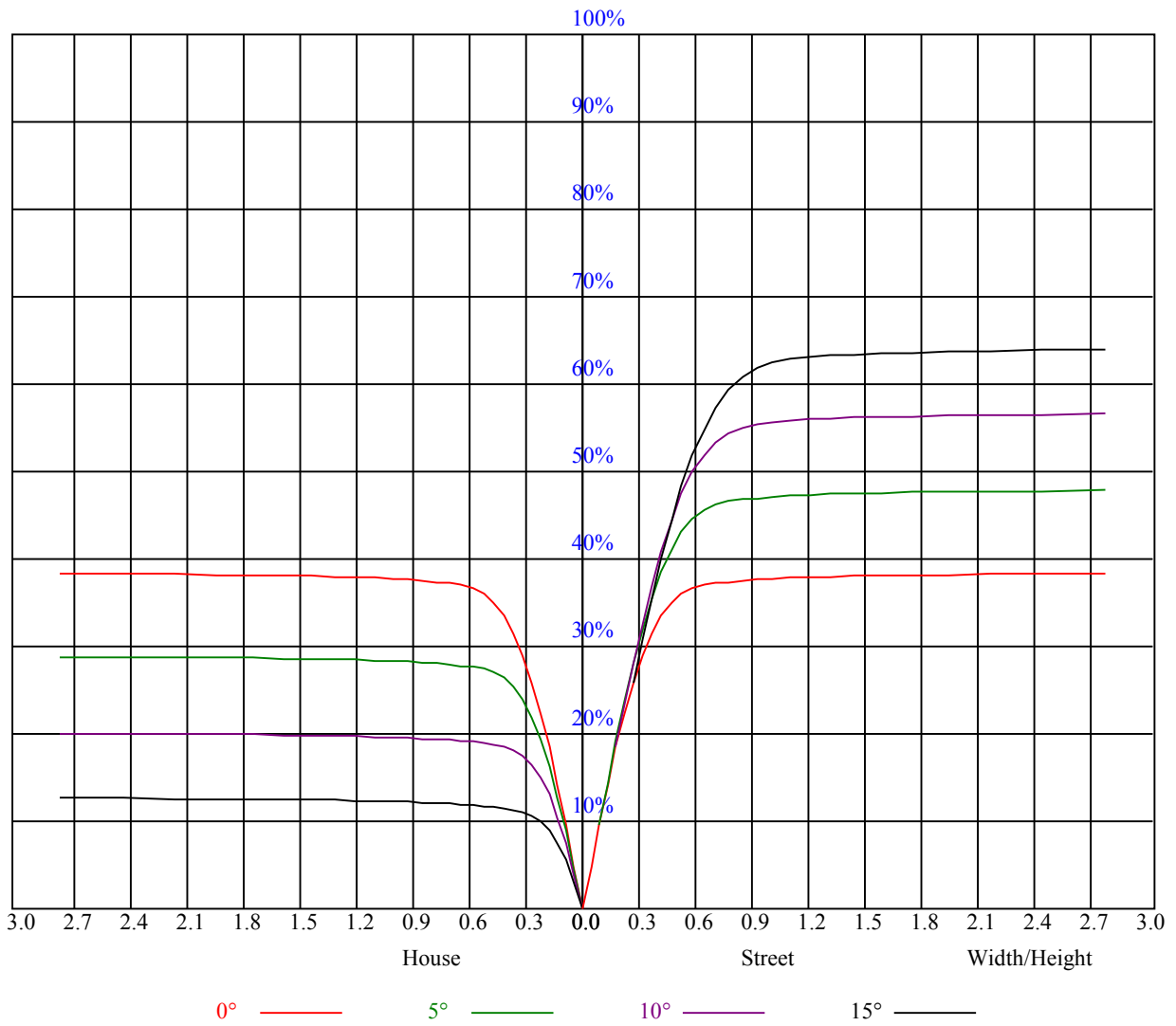
Glare	Quality	Service Values Illuminance(lx)							
1.15	A	2000	1000	500	<=300				
1.5	B		2000	1000	500	<=300			
1.85	C			2000	1000	500	<=300		
2.2	D				2000	1000	500	<=300	
2.55	E					2000	1000	500	<=300
		a	b	c	d	e	f	g	h

Luminance Limiting Curve





RHOCC	80			70			50			30			10			0
RHOW	50	30	10	50	30	10	50	30	10	50	30	10	50	30	10	0
RCR	COEFFICIENTS OF UTILIZATION RHOFC=20 CU															
0	0.93	0.93	0.93	0.91	0.91	0.91	0.87	0.87	0.87	0.83	0.83	0.83	0.80	0.80	0.80	0.78
1	0.87	0.85	0.83	0.85	0.83	0.82	0.82	0.81	0.79	0.79	0.78	0.77	0.76	0.76	0.75	0.74
2	0.82	0.79	0.76	0.80	0.78	0.76	0.78	0.76	0.74	0.76	0.74	0.72	0.73	0.72	0.71	0.70
3	0.77	0.74	0.71	0.76	0.73	0.70	0.74	0.71	0.69	0.72	0.70	0.68	0.71	0.69	0.67	0.66
4	0.73	0.69	0.67	0.72	0.69	0.66	0.71	0.68	0.65	0.69	0.67	0.65	0.68	0.66	0.64	0.63
5	0.70	0.66	0.63	0.69	0.65	0.62	0.68	0.64	0.62	0.66	0.64	0.61	0.65	0.63	0.61	0.60
6	0.66	0.62	0.59	0.66	0.62	0.59	0.65	0.61	0.59	0.64	0.61	0.58	0.63	0.60	0.58	0.57
7	0.63	0.59	0.57	0.63	0.59	0.56	0.62	0.59	0.56	0.61	0.58	0.56	0.60	0.58	0.56	0.55
8	0.61	0.57	0.54	0.60	0.56	0.54	0.59	0.56	0.54	0.59	0.56	0.53	0.58	0.55	0.53	0.52
9	0.58	0.54	0.52	0.58	0.54	0.51	0.57	0.54	0.51	0.56	0.53	0.51	0.56	0.53	0.51	0.50
10	0.56	0.52	0.49	0.55	0.52	0.49	0.55	0.52	0.49	0.54	0.51	0.49	0.54	0.51	0.49	0.48



Intensity data(cd)

C/γ(°)	0.0	5.0	10.0	15.0	20.0	25.0	30.0	35.0	40.0
0.0	2379.38	2338.88	2152.13	1859.63	1441.13	882.00	359.44	81.11	36.90
45.0	2387.25	2301.19	2076.19	1776.38	1303.88	735.75	303.75	65.08	34.54
90.0	2378.81	2261.81	2016.00	1653.19	1098.17	623.59	193.73	52.76	30.88
135.0	2385.56	2296.69	2086.88	1748.81	1269.56	729.56	293.63	57.32	32.12
180.0	2379.38	2273.63	2043.56	1687.50	1098.45	637.20	186.92	45.56	28.29
225.0	2387.25	2331.00	2123.44	1797.19	1274.63	774.62	272.42	50.06	29.53
270.0	2378.81	2348.44	2198.25	1887.19	1467.56	892.13	380.25	68.40	32.79
315.0	2385.56	2326.50	2117.25	1807.31	1260.56	770.40	293.68	59.74	32.57
360.0	2379.38	2338.88	2152.13	1859.63	1441.13	882.00	359.44	81.11	36.90
C/γ(°)	45.0	50.0	55.0	60.0	65.0	70.0	75.0	80.0	85.0
0.0	25.71	20.42	15.81	12.54	9.84	8.10	6.69	5.85	5.29
45.0	24.36	19.18	15.02	11.87	9.45	7.71	6.47	5.74	5.18
90.0	22.95	18.11	14.06	11.53	9.23	7.71	6.86	7.99	5.18
135.0	23.57	18.56	15.13	11.81	9.45	7.88	6.75	6.08	5.29
180.0	21.54	17.61	14.06	11.31	9.06	7.65	6.53	5.91	5.34
225.0	22.50	18.11	14.79	11.87	9.51	7.88	6.64	5.91	5.46
270.0	24.69	19.63	15.75	12.83	10.18	8.33	7.03	6.47	8.16
315.0	24.41	19.29	15.19	12.04	9.62	7.82	6.58	5.85	5.40
360.0	25.71	20.42	15.81	12.54	9.84	8.10	6.69	5.85	5.29
C/γ(°)	90.0								
0.0	4.95								
45.0	4.95								
90.0	4.95								
135.0	4.95								
180.0	4.95								
225.0	4.95								
270.0	4.95								
315.0	4.95								
360.0	4.95								